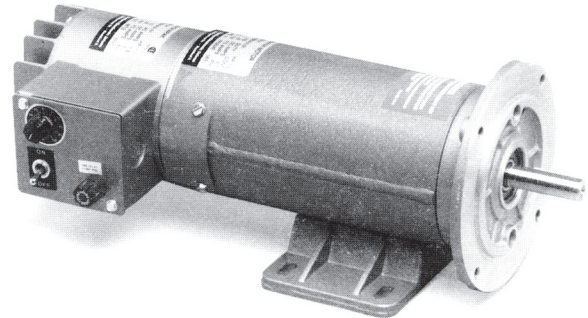
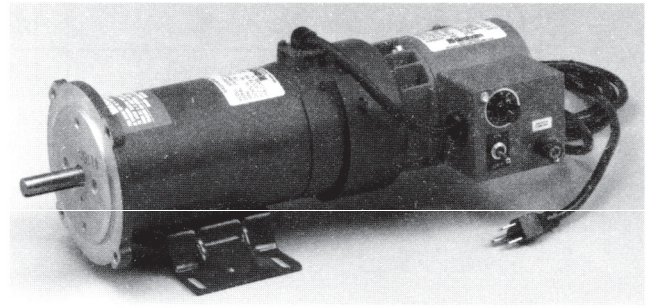


# Magnapak Series



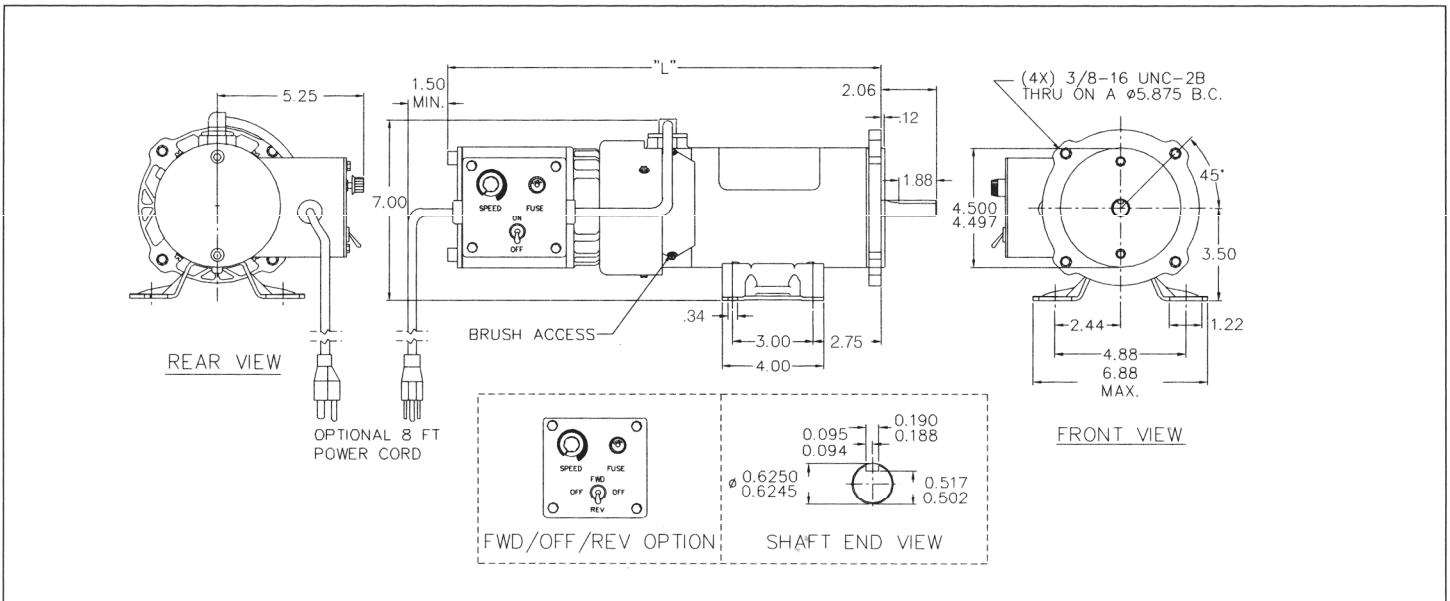
- Rated for 1/4 to 1 HP
- One piece construction— motor, controller and operator controls all assembled as one easy to install unit
- On/Off switch, speed potentiometer, and line fuse mounted on operator's control panel
- 150% maximum torque
- $\pm 1\%$  speed regulation
- 90:1 full torque speed range
- Permanent magnet motors
- 120 or 240 VAC models with broad input voltage range
- C-Face motor mount
- Continuous duty rating
- Totally enclosed, non-ventilated (TENV) and (TEFC) Totally enclosed, fan-cooled versions
- Adjustments for maximum speed, IR compensation, and torque limit
- Easy installation with no wiring between controller and motor
- Factory selected matched components for best performance
- Inexpensive installation, just bolt motor in place and wire to AC line

## SELECTION

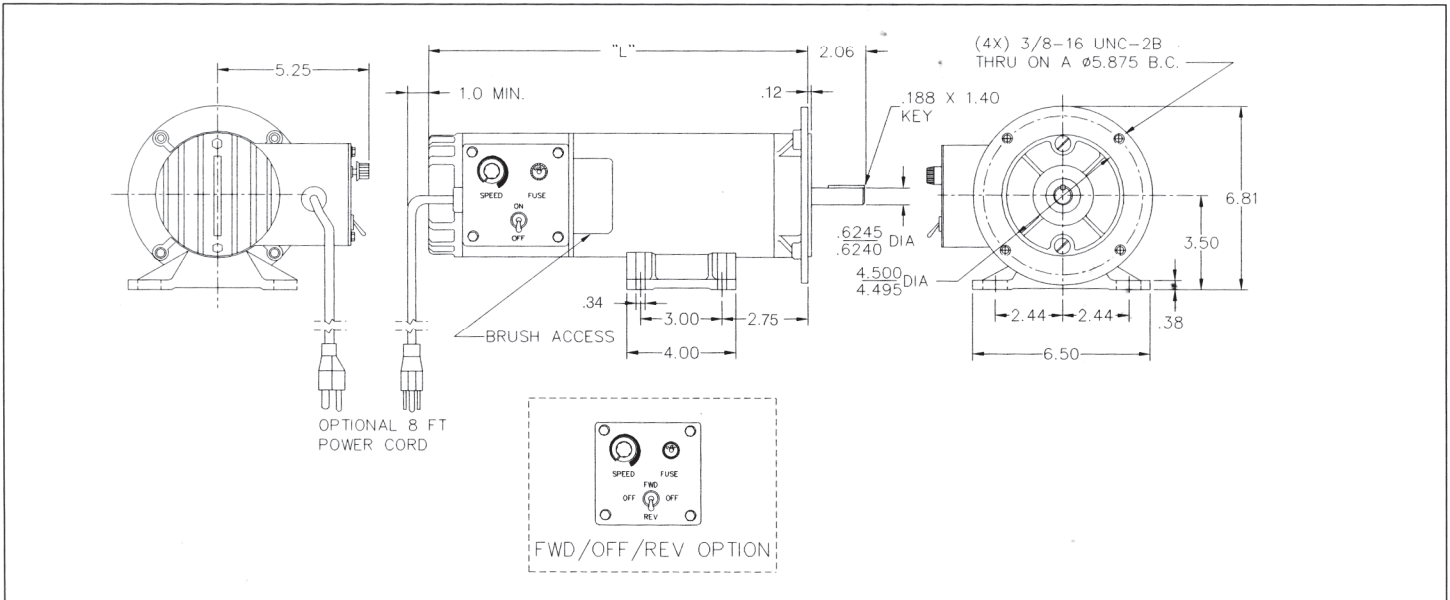
Description	Part Number
<b>Non-Reversing with Operator Controls</b>	
1/4 HP, 120 VAC (TENV)	301-FM1
1/3 HP, 120VAC (TENV)	302-FM1
1/2 HP, 120 VAC (TEFC)	303-FM1
3/4 HP, 120 VAC (TEFC)	304-FM1
3/4 HP, 240 VAC (TEFC)	311-FM1
1 HP, 240 VAC (TEFC)	312-FM1
<b>Reversing with Braking and Operator Controls</b>	
1/4 HP, 120 VAC (TENV)	301-FM2
1/3 HP, 120 VAC (TENV)	302-FM2
1/2 HP, 120 VAC (TEFC)	303-FM2
3/4 HP, 120 VAC (TEFC)	304-FM2
3/4 HP, 240 VAC (TEFC)	311-FM2
1 HP, 240 VAC (TEFC)	312-FM2

Maximum HP	Input Voltage	Motor Enclosure	Output Torque (in-lb)	Continuous Duty HP at Set Speed (RPM)				
				1750	1175	875	590	100
1/4	120	TENV	9	0.250	0.167	0.125	0.084	0.014
1/3	120	TENV	12	0.333	0.222	0.167	0.111	0.019
1/2	120	TEFC	18	0.500	0.333	0.250	0.167	0.028
3/4	120	TEFC	27	0.750	0.500	0.375	0.250	0.042
3/4	240	TEFC	27	0.750	0.500	0.375	0.250	0.042
1	240	TEFC	36	1.000	0.667	0.500	0.333	0.057

## Magnapak 56C TEFC Dimensions



## Magnapak 56C TENV Dimensions



## Magnapak Part Numbering System

Example:

301CM0-LD

**First 3 Digits**  
Call out the horsepower and voltage

**Fourth Letter**  
Calls out base option  
F=Base  
C=No Base

**Fifth Letter**  
is a constant

**Sixth Digit**  
Calls out control options  
0=No Controls  
1=With Controls  
2=Reversing and Braking option

**Seventh Letter**  
Calls out Power Cord option  
L=with Cord  
(Omit letter if no cord is required)

**Eighth Letter**  
Calls out Control Box position  
L=Control Box on Left  
(Omit letter if Control Box is on Right)